

HSF

NOTES:

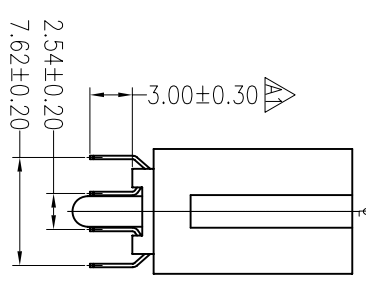
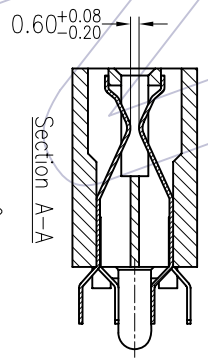
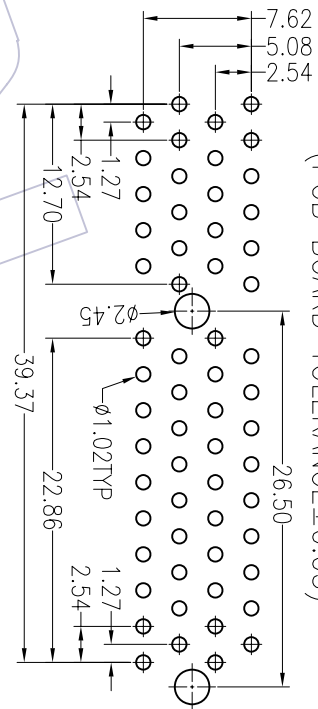
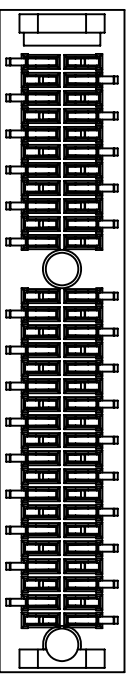
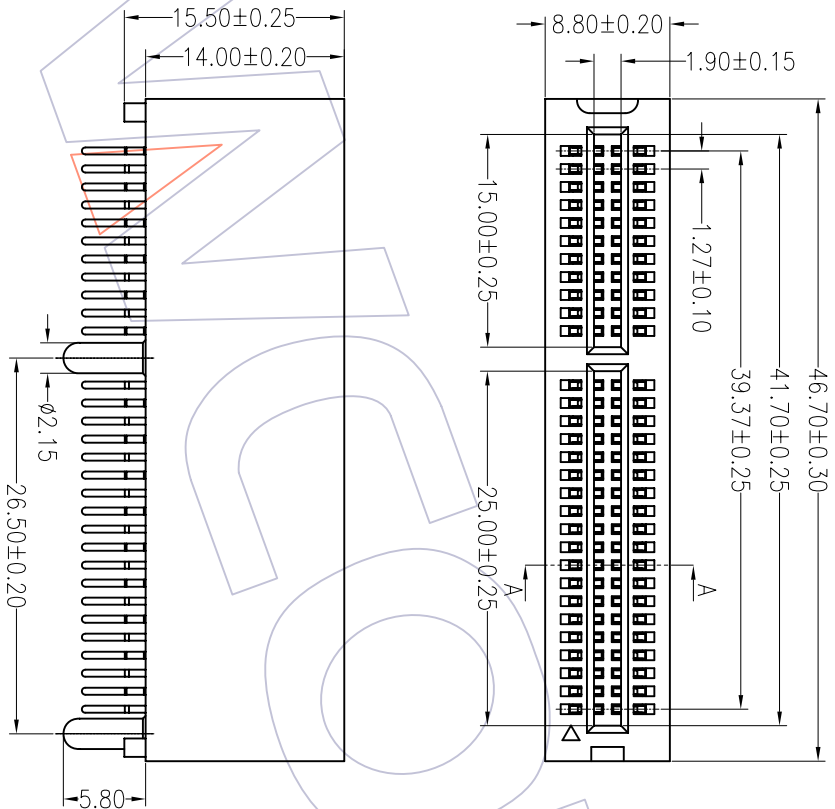
Current Rating: 1.0AMP
 Contact Resistance: 30mΩ max
 Withstand Voltage: 500V AC/DC
 Insulation Resistance: 1000MΩ min
 Operation Temperature: -40°C to +105°C
 Contact Material: Brass
 Contact plating: Au or Sn Over Ni
 Insulator Material: PA66+30%G.F

Ordering Information

7510-060 S X B B 01

60Pin 180° DIP Color:
 A=4975C
 B=Black
 W=White
 U=Blue
 Y=Yellow
 R=Red
 G=Grey

Insulator:
 B=PA66



Recommended P.C.B Layout(Top Side)
 (PCB BOARD TOLERANCE±0.05)

REV	DATE	MODIFICATION DESCRIPTION	CHANGE	APPROVE	OPERATION	DRAW	SCALE	PART NO.	TITLE:
A1	08/08/07	变更DIP脚长度			X.X	DESIGN	1:1	7510-060SXB01	PCI Slot 60Pin DIP Type With Post
A0	08/07/29	NEW			X.XX	CHECK	A4		
REV	DATE	MODIFICATION DESCRIPTION	CHANGE	APPROVE	Angle	APPROVE	SHEET		
					± 3'		1/1		Customer NO.

WCON 维峰五金电子有限公司
 WAFE HARDWARE ELECTRONICS CO. LTD

08.08.07

7510-060SXB01

PCI Slot 60Pin DIP Type With Post